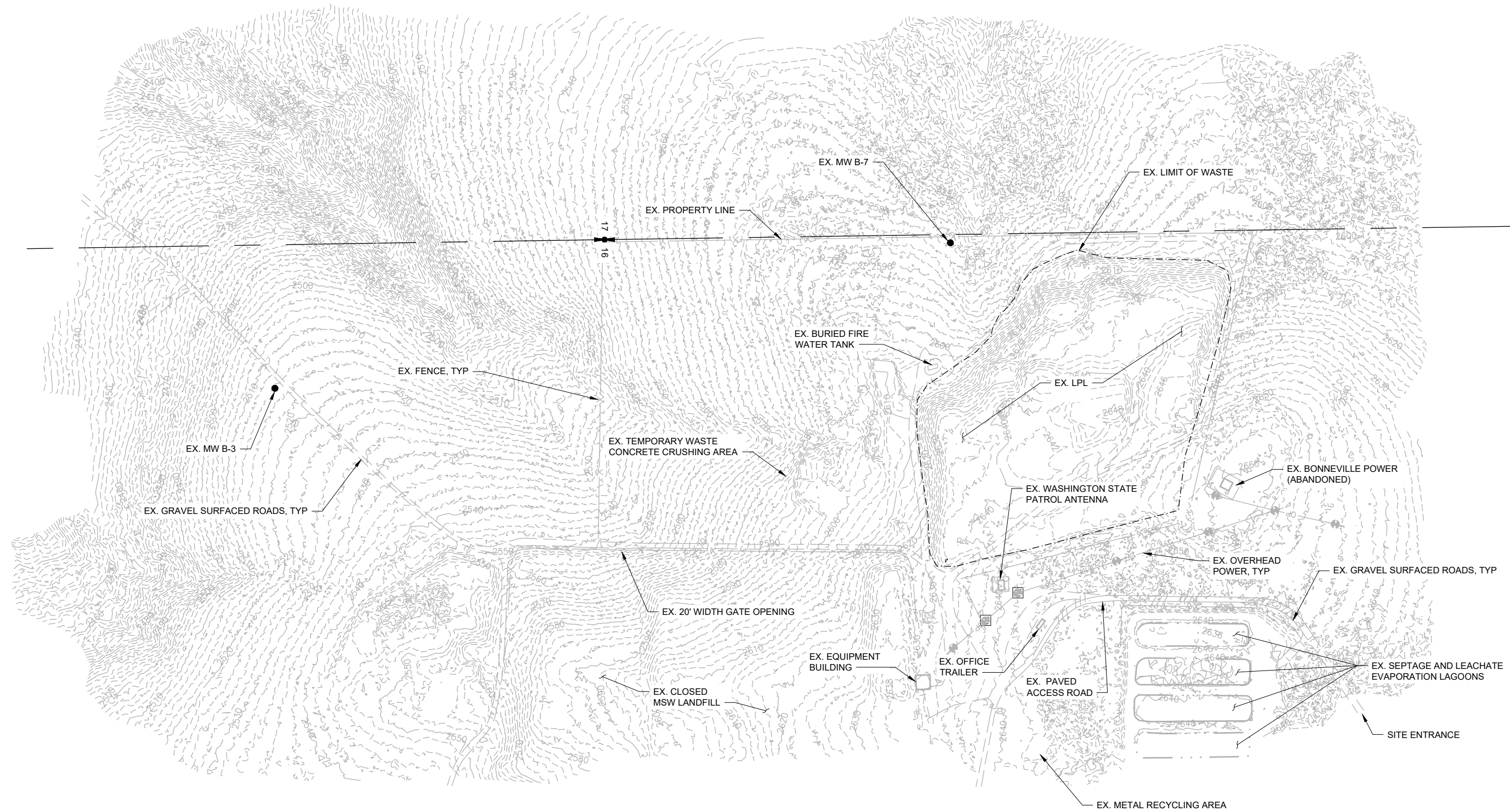




SCALE IN FEET  
0 150 300



PATH: U:\PSO\Projects\Clients\1763-1763-009 Ryegrass LPL\Print\Update\995oca\CADD\DWG\Plan Sheets  
LAYOUT: OVERALL  
PLOTTED BY: purgabut DATE: Monday, May 24, 2021 12:47:14 PM

REVISIONS	DATE	BY	DESIGNED

**ONE INCH AT FULL SCALE.  
IF NOT, SCALE ACCORDINGLY**

FILE NAME  
1763009 Ryegrass LPL Exst Conditions

JOB No.  
553-1763-009

DATE  
11/30/2020

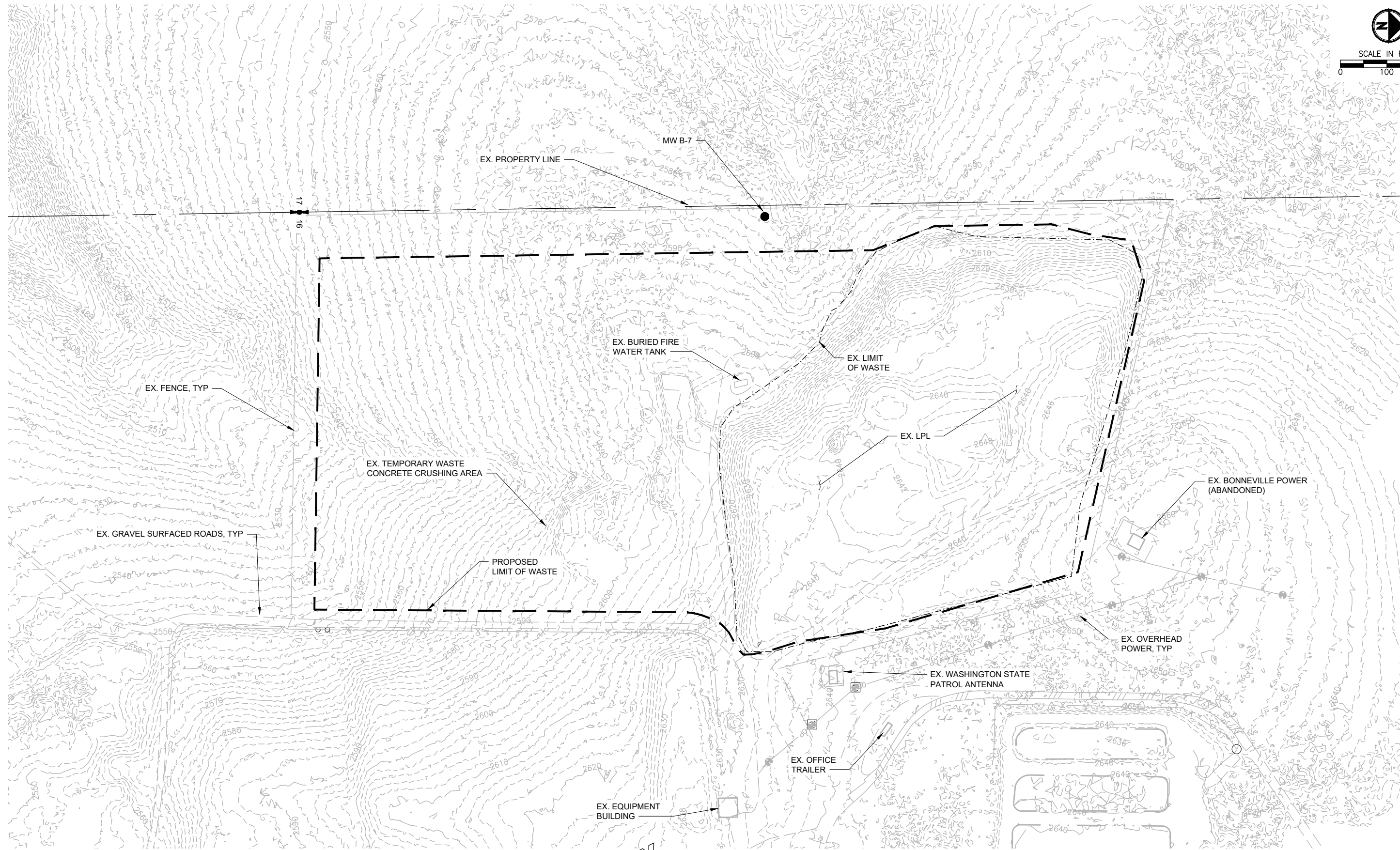
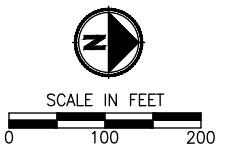
PRELIMINARY



PROJECT NAME  
**RYEGRASS LIMITED PURPOSE LANDFILL**  
KITITITAS COUNTY  
EXISTING SITE CONDITIONS

FIGURE  
**1-1**

NOT FOR CONSTRUCTION

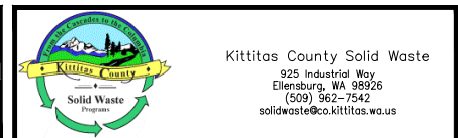


PATH: U:\PSO\Projects\Clients\1763-Kittitas County\553-1763-009\_Ryegrass\1763-009\_Ryegrass\CADD\DWG\Plan\_Sheets  
 PLOTTED BY: purgubut DATE: Monday, May 24, 2021 1:04:03 PM  
 LAYOUT: SITE

REVISIONS	DATE	BY	DESIGNED
			DRAWN
			CHECKED
			APPROVED

**ONE INCH AT FULL SCALE, IF NOT, SCALE ACCORDINGLY**  
 FILE NAME: 1763009 Ryegrass LPL Exst Conditions  
 JOB No.: 553-1763-009  
 DATE: 11/30/2020

PRELIMINARY



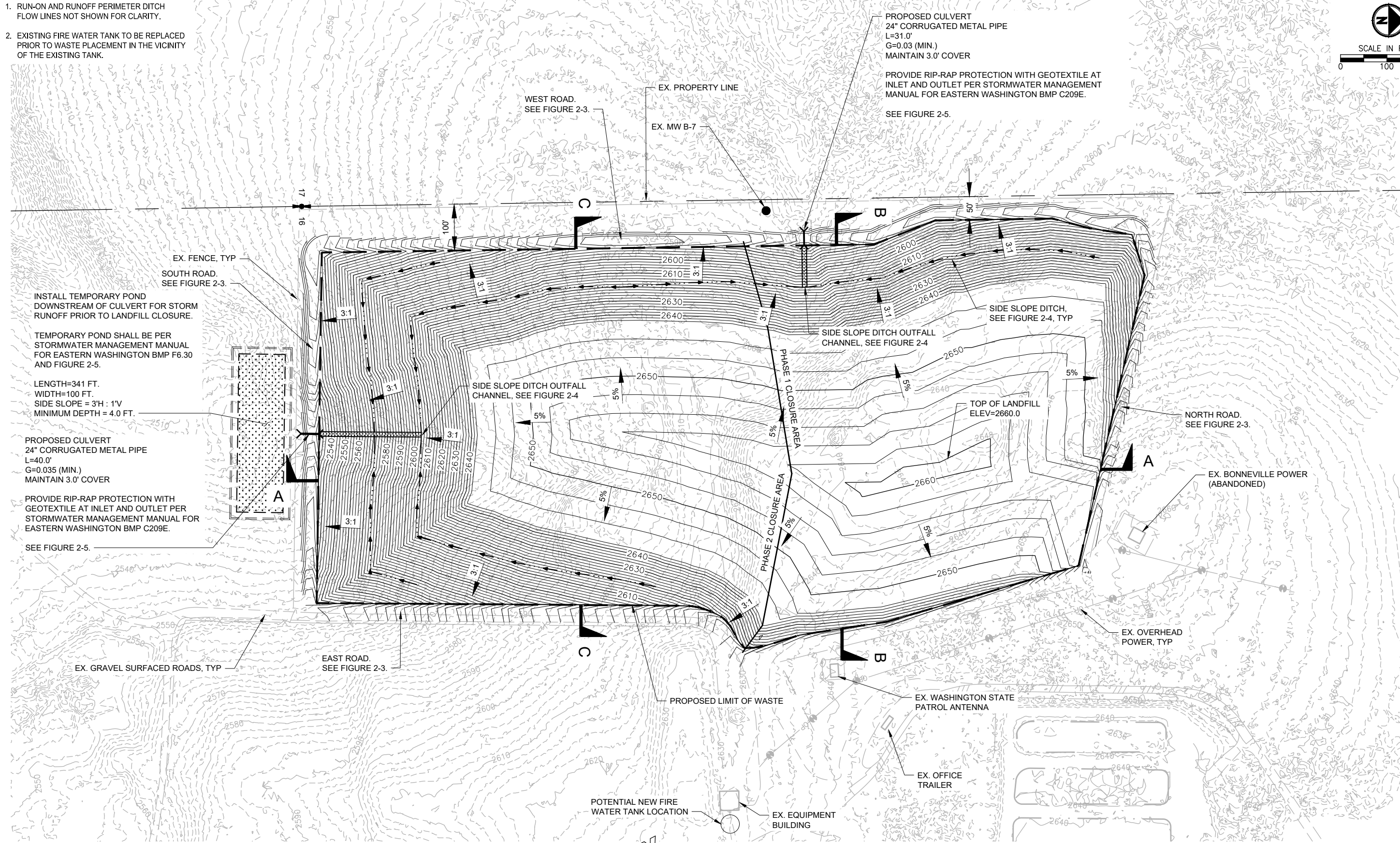
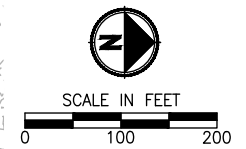
PROJECT NAME  
**RYEGRASS LIMITED PURPOSE LANDFILL**  
 KITTITAS COUNTY  
 EXISTING LPL CONDITIONS

FIGURE  
**1-2**

NOT FOR CONSTRUCTION

**NOTES**

1. RUN-ON AND RUNOFF PERIMETER DITCH FLOW LINES NOT SHOWN FOR CLARITY.
2. EXISTING FIRE WATER TANK TO BE REPLACED PRIOR TO WASTE PLACEMENT IN THE VICINITY OF THE EXISTING TANK.



PROPOSED CULVERT  
24" CORRUGATED METAL PIPE  
L=31.0'  
G=0.03 (MIN.)  
MAINTAIN 3.0' COVER

PROVIDE RIP-RAP PROTECTION WITH GEOTEXTILE AT INLET AND OUTLET PER STORMWATER MANAGEMENT MANUAL FOR EASTERN WASHINGTON BMP C209E.

SEE FIGURE 2-5.

INSTALL TEMPORARY POND DOWNSTREAM OF CULVERT FOR STORM RUNOFF PRIOR TO LANDFILL CLOSURE.

TEMPORARY POND SHALL BE PER STORMWATER MANAGEMENT MANUAL FOR EASTERN WASHINGTON BMP F6.30 AND FIGURE 2-5.

LENGTH=341 FT.  
WIDTH=100 FT.  
SIDE SLOPE = 3'H : 1'V  
MINIMUM DEPTH = 4.0 FT.

PROPOSED CULVERT  
24" CORRUGATED METAL PIPE  
L=40.0'  
G=0.035 (MIN.)  
MAINTAIN 3.0' COVER

PROVIDE RIP-RAP PROTECTION WITH GEOTEXTILE AT INLET AND OUTLET PER STORMWATER MANAGEMENT MANUAL FOR EASTERN WASHINGTON BMP C209E.

SEE FIGURE 2-5.

PATH: U:\PSO\Projects\Clients\1763-Kittitas County\553-1763-009\_Ryegross\PI\Print\Update\95\95\CA\DWG\Plan\_Sheets\_PLOTTED BY: purgabut DATE: Monday, May 24, 2021 1:10:41 PM

REVISIONS	DATE	BY	DESIGNED

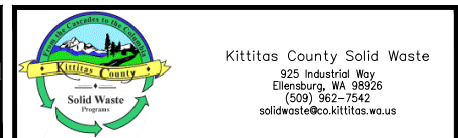
**ONE INCH AT FULL SCALE, IF NOT, SCALE ACCORDINGLY**

FILE NAME  
1763009 Ryegross LPL GRAD

JOB No.  
553-1763-009

DATE  
11/30/2020

PRELIMINARY

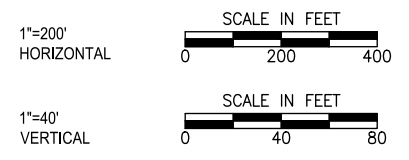
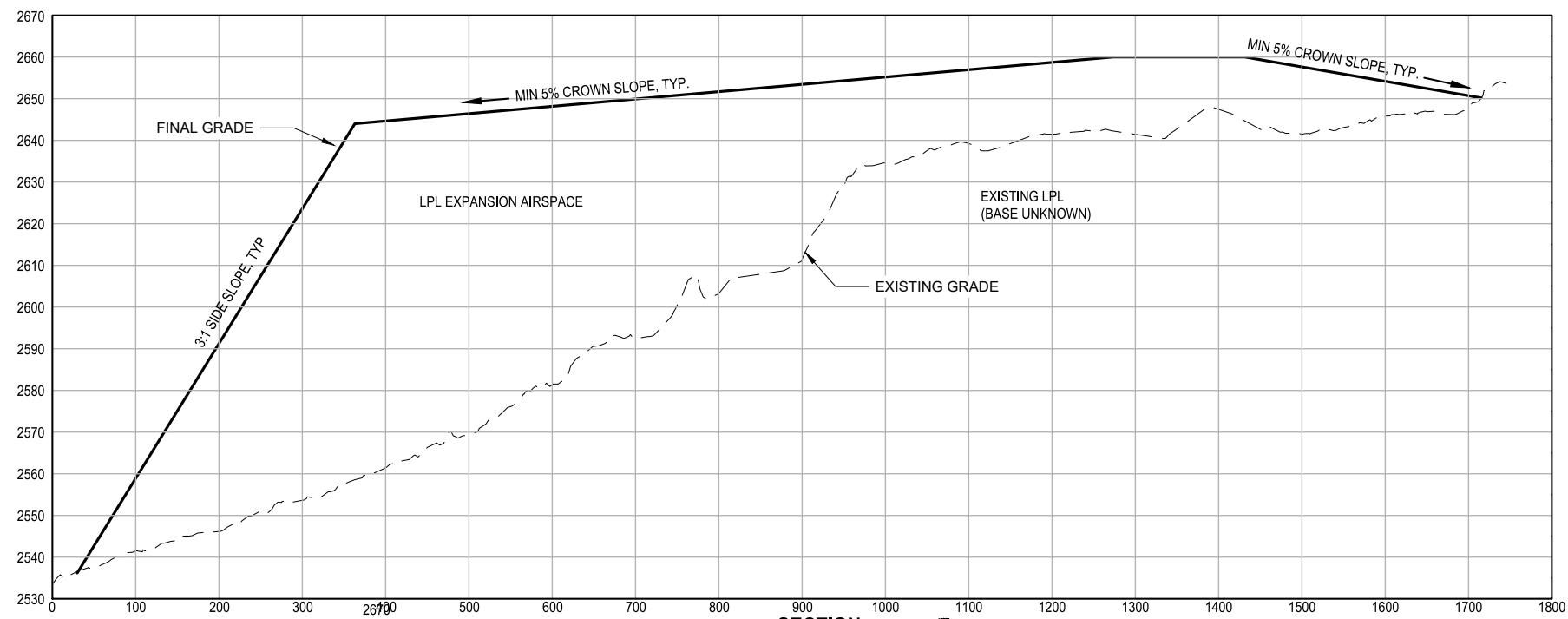


PROJECT NAME  
**RYEGROSS LIMITED PURPOSE LANDFILL**  
KITITITAS COUNTY  
PROPOSED FINAL FILL PLAN

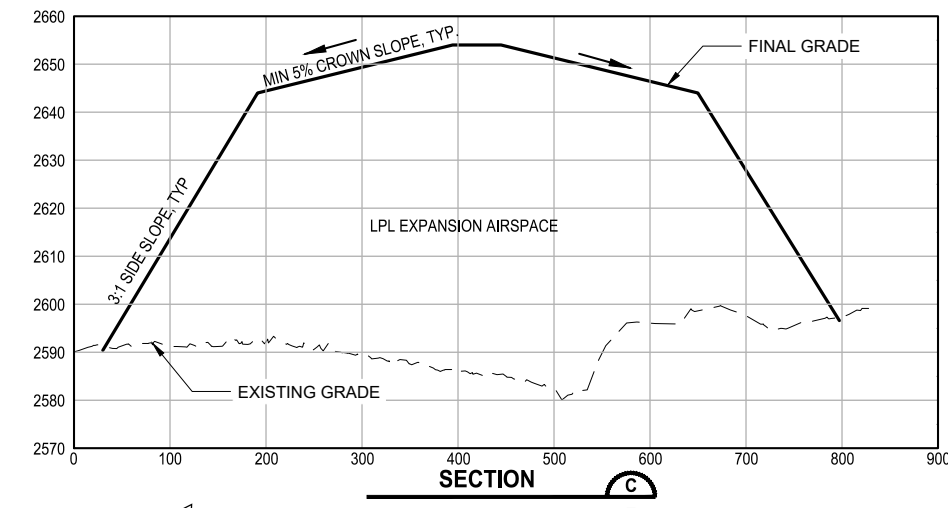
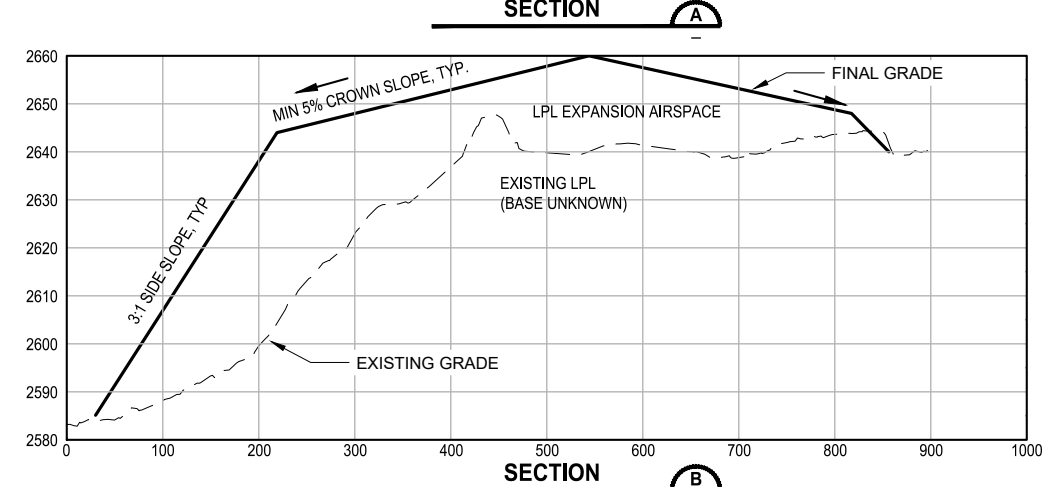
FIGURE  
**2-1**

NOT FOR CONSTRUCTION

PATH: U:\PSO\Projects\Clients\1763-Kittitas County\553-1763-009 Ryegrass LPL Profiles\95Sves\CADD\DWG\Plan\_Sheets PLOTTED BY: purgubut DATE: Monday, May 24, 2021 1:15:45 PM  
 LAYOUT: SITE



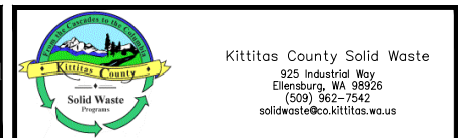
- NOTES:**
1. MAXIMUM LANDFILL ELEVATION APPROXIMATELY 2660 FEET.
  2. EXISTING GRADE REPRESENTS GRADE AT TIME OF SURVEY, JANUARY 2020.
  3. FINAL GRADE REPRESENTS TOP OF PROPOSED WASTE ELEVATION.
  4. FINAL COVER MATERIALS SHALL MEET SPECIFIC MATERIAL GRADATIONS TO BE DETERMINED AT TIME OF CLOSURE AFTER EVALUATING POTENTIAL BORROW SOURCES FOR CONSTRUCTION USE.



REVISIONS	DATE	BY	DESIGNED

**ONE INCH AT FULL SCALE, IF NOT, SCALE ACCORDINGLY**  
 FILE NAME: 1763009 Ryegrass LPL PROFILES  
 JOB No.: 553-1763-009  
 DATE: 11/30/2020

PRELIMINARY

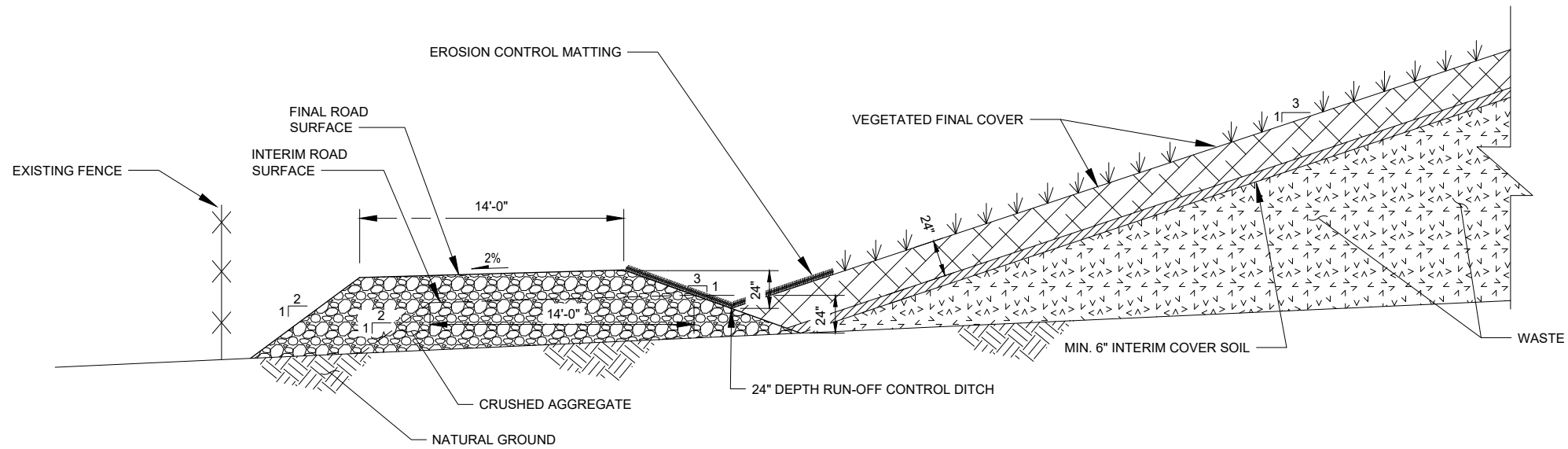


PROJECT NAME  
**RYEGRASS LIMITED PURPOSE LANDFILL**  
 KITTITAS COUNTY  
 LANDFILL SECTIONS

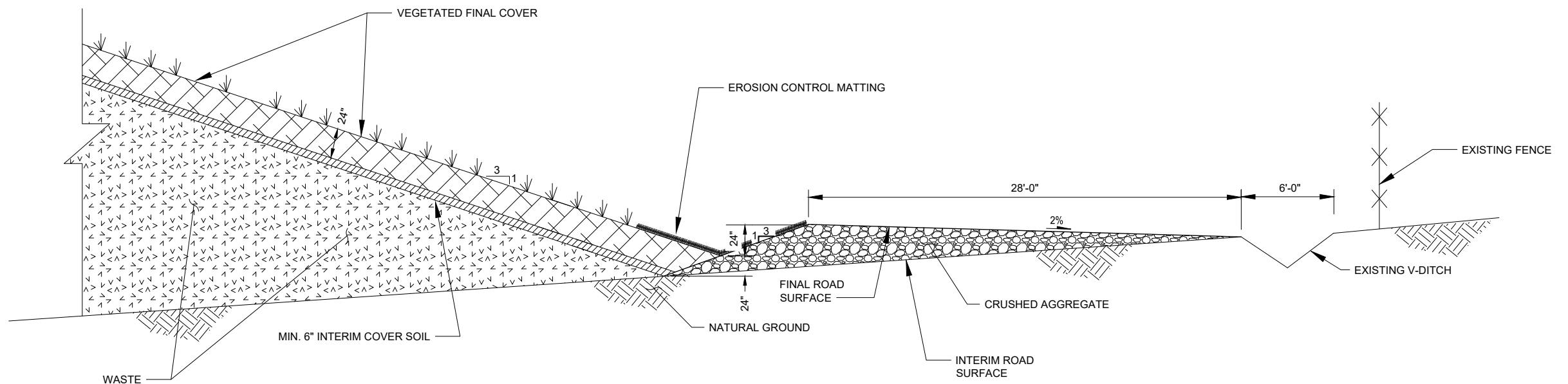
FIGURE  
**2-2**

NOT FOR CONSTRUCTION

PATH: U:\PSO\Projects\Clients\1763-Kittitas County\1763-009 Ryegrass LPL\Drawings\CADD\DWG\Plan\_Sheets  
 PLOTTED BY: purgabut DATE: Monday, May 24, 2021 1:24:32 PM  
 LAYOUT: SITE



**TYPICAL NORTH, WEST, AND SOUTH ROAD SECTION**



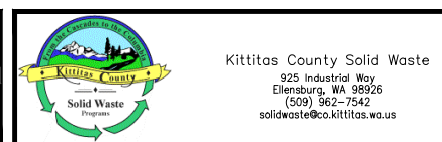
**TYPICAL EAST ROAD SECTION**

NOT FOR CONSTRUCTION

REVISIONS	DATE	BY	DESIGNED
			DRAWN
			CHECKED
			APPROVED

**ONE INCH AT FULL SCALE.  
 IF NOT, SCALE ACCORDINGLY**  
 FILE NAME  
 1763009 Ryegrass LPL DETAILS  
 JOB No.  
 553-1763-009  
 DATE  
 11/30/2020

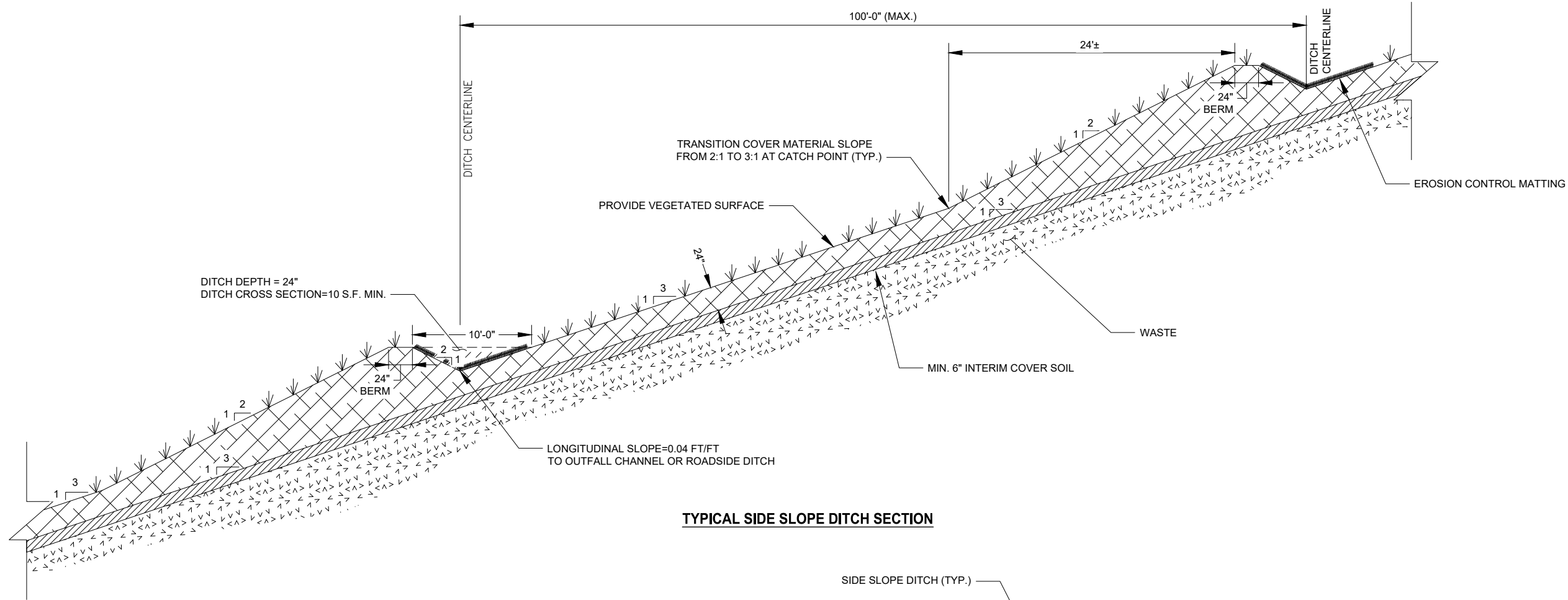
PRELIMINARY



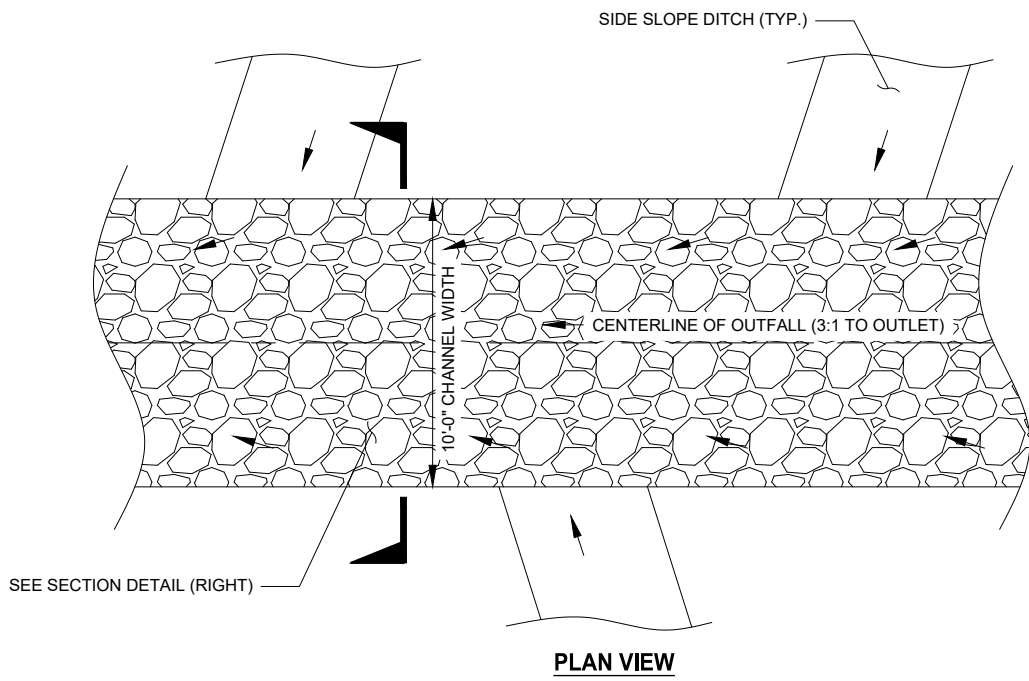
PROJECT NAME  
**RYEGRASS LIMITED PURPOSE LANDFILL**  
 KITTITAS COUNTY  
 ROAD SECTIONS

**FIGURE**  
**2-3**

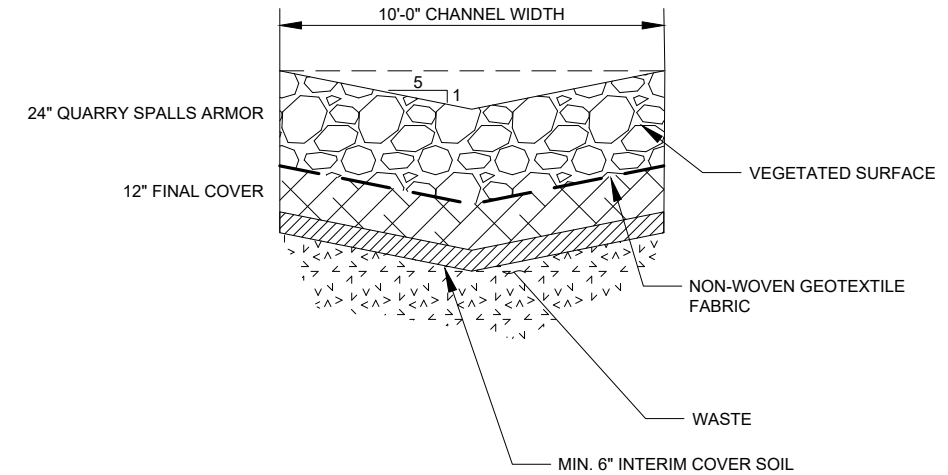
PATH: U:\PSOX\Projects\Clients\1763-Kittitas County\553-1763-009 Ryegrass LPL\Update\995\cadd\DWG\Plan Sheets  
 LAYOUT: SLOPE PLOTTED BY: purgabut DATE: Monday, May 24, 2021 1:24:50 PM



**TYPICAL SIDE SLOPE DITCH SECTION**



**PLAN VIEW**



**SECTION VIEW**

**SIDE SLOPE DITCH OUTFALL CHANNEL**

PRELIMINARY

NOT FOR CONSTRUCTION

REVISIONS	DATE	BY	DESIGNED

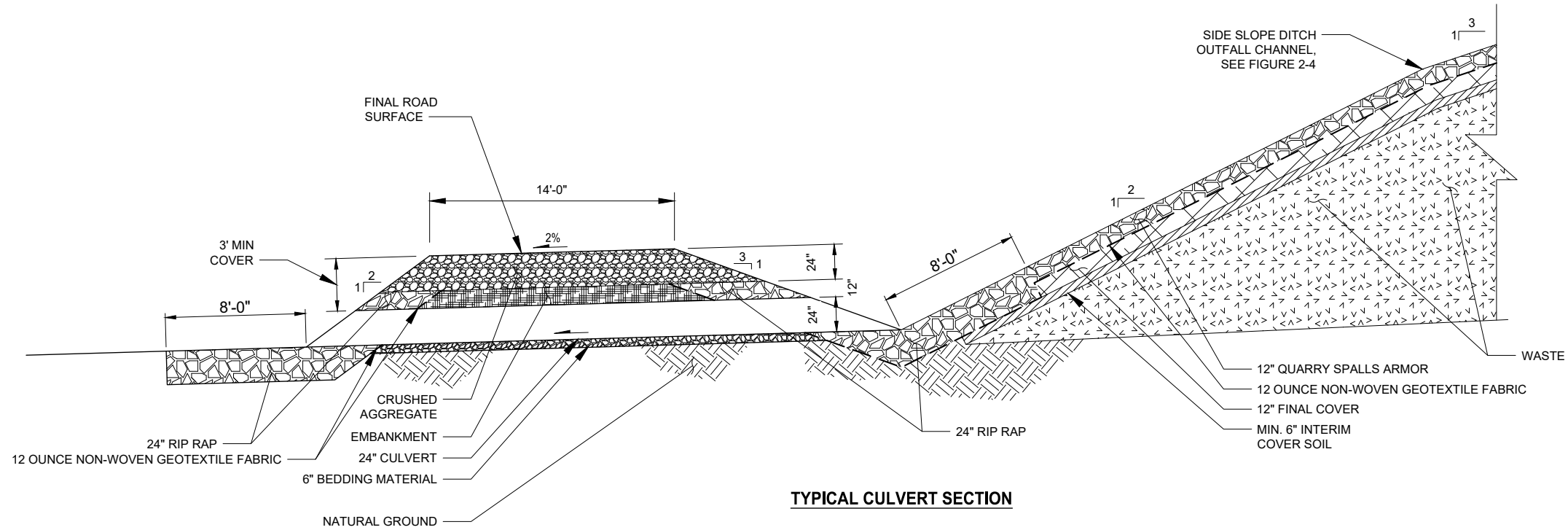
**ONE INCH AT FULL SCALE.  
 IF NOT, SCALE ACCORDINGLY**  
 FILE NAME  
 1763009 Ryegrass LPL DETAILS  
 JOB No.  
 553-1763-009  
 DATE  
 11/30/2020



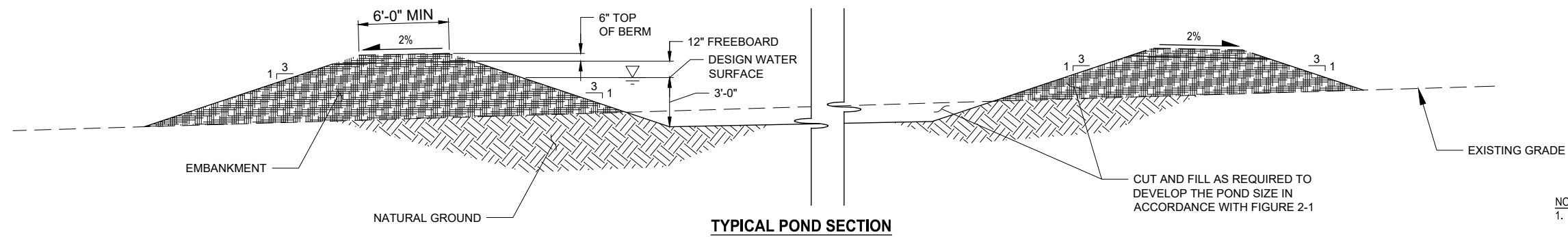
PROJECT NAME  
**RYEGRASS LIMITED PURPOSE LANDFILL**  
 KITTITAS COUNTY  
 SURFACE WATER DETAILS

**FIGURE**  
**2-4**

PATH: u:\PSO\Projects\Clients\1763-1763-009 Ryegrass LPL\Update\995vca\CAAD\DWG\Plan Sheets  
LAYOUT: CULVERT DATE: Monday, May 24, 2021 1:25:07 PM



- NOTES:
- 1. SEE FIGURE 2-1 FOR CULVERT SLOPE REQUIREMENTS.
  - 2. LOCALLY DEPRESS CULVERT AS REQUIRED TO MAINTAIN 3 FEET OF COVER.
  - 3. EXTEND THE 24-INCH THICK RIP RAP 8 FEET UP INLET DITCHES AND CHANNELS.
  - 4. EXTEND THE 24-INCH THICK RIP RAP 8 FEET BEYOND THE OUTLET AT WIDTH OF 10 FEET.



- NOTES:
- 1. PROVIDE A SPILLWAY IN ACCORDANCE WITH STORMWATER MANAGEMENT MANUAL FOR EASTERN WASHINGTON BMP F6.10. SPILLWAY WIDTH SHALL BE 20 FEET.

NOT FOR CONSTRUCTION

REVISIONS	DATE	BY	DESIGNED
			DRAWN
			CHECKED
			APPROVED

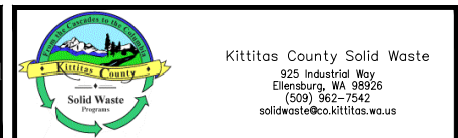
ONE INCH AT FULL SCALE.  
IF NOT, SCALE ACCORDINGLY

FILE NAME  
1763009 Ryegrass LPL DETAILS

JOB No.  
553-1763-009

DATE  
11/30/2020

PRELIMINARY



PROJECT NAME  
**RYEGRASS LIMITED PURPOSE LANDFILL**  
KITITAS COUNTY  
CULVERT DETAIL

FIGURE  
**2-5**